

WARNING!!

The attached Gold Medal Manual is for reference only and is not intended for any other purpose. The information contained in these on line manuals is subject to change at any time. Improvements are always being made to Gold Medal equipment and this information may not be the latest available for your purposes. It is critical that you call Gold Medal Products technical service department at 1-800-543-0862 for any questions about machine operations, replacement parts, or any service questions. Neither Gold Medal nor Phil Erb Concessions represent that these on line manuals contain the most current information available for the product represented.

2454 RETRO POP

Popcorn Machine Instruction Manual

Model #2454



 **GOLD MEDAL**[®]
FUNFOOD EQUIPMENT & SUPPLIES

Cincinnati, OH 45241-4807 USA

SAFETY PRECAUTIONS



⚠ DANGER

Machine must be properly grounded to prevent electrical shock to personnel.
Do NOT immerse the kettle, warmer, or any other part of this equipment in water.
Always unplug the equipment before cleaning or servicing.



⚠ WARNING

Any alterations to this equipment will void the warranty and may cause a dangerous situation. NEVER make alterations to the equipment.
Make sure all machine switches are in the OFF position before plugging the equipment into a receptacle.



⚠ WARNING

To avoid serious burns, do NOT touch the kettle while it is hot.



⚠ WARNING

Adequate eye protection must be used when servicing this equipment to prevent the possibility of injury.



⚠ CAUTION

This equipment is designed and sold for commercial use only. This equipment is not to be used by the consumer in home use. Do not allow direct contact of this equipment by the public when used in food service locations. Only personnel trained and experienced in the equipment operation may operate this equipment.
Carefully read all installation instructions before operating the equipment.

NOTE

The information, specifications and illustrations contained in this manual represent the latest data available at time of publication. Right is reserved to make changes as required at the discretion of Gold Medal Products Company without notice.

INSTALLATION INSTRUCTIONS

INSTALLATION

Your new 60 Special or P-60 Popcorn Machine is completely assembled. Remove all Packing material and tape before starting operation.

OPERATING INSTRUCTIONS

CONTROLS AND THEIR FUNCTIONS

There are three switches on the popper.

LIGHT AND WARMER SWITCH

Turns on the heat to the bottom corn pan and heat light.

KETTLE MOTOR SWITCH

Turns on the motor which drives kettle agitator shaft.

KETTLE HEAT SWITCH

Turns on the heat element

AMOUNT OF POPCORN AND OIL

Your new popper is equipped with a six ounce (177 ml) corn measure cup. We recommend flavored and colored coconut oil. Popcorn popped in coconut oil stays fresh longer. Coconut oil does not leave black deposits in your kettle like other oils.

Corn charge - 6 oz. (177 ml)

Oil charge - 1.6 to 2.0 oz. (60 ml)


Flavacol - 1 tablespoon (8 cc)

POPPING INSTRUCTIONS



1. Turn KETTLE HEAT and KETTLE MOTOR switch ON.
2. Make test pop with 3 kernels of corn and 1 oz. (30 ml) of oil.
3. Load pre-measured popcorn and oil pouch into kettle.
4. When corn has popped, dump kettle.
5. Repeat cycle starting with Item #3; always pop 3-5 batches for best popcorn.

CARE AND CLEANING




	⚠ WARNING
	Unplug your machine before cleaning glass panels and case. Never immerse the kettle in water, this will ruin the electrical components and automatically void the warranty.

Each time you finish a series of poppings, wipe the outside of the kettle with a soft cloth to remove any oil drippage on the outside of the kettle. After you finish popping for the day, allow kettle to cool until it is not too hot to handle, but still warm. Unplug kettle and remove it from the machine. With a cloth, wipe out the inside of the kettle, kettle lid, crossbar, outside and underneath of the kettle.

Cleaning the cabinet of your machine is easy. Take a clean cloth and wipe excess grease from the glass. Wipe the outside of the machine also.

NOTE: Never use a glass or plastic cleaner that contains ammonia. It will crack the plastic on the machine.

MAINTENANCE INSTRUCTIONS

	<p style="text-align: center;">⚠ WARNING</p> <p>Do not immerse the kettle, warmer, or any other part of this equipment in water. Always unplug your machine before servicing.</p>
	<p style="text-align: center;">⚠ WARNING</p> <p>Adequate eye protection must be used when servicing this equipment to prevent the possibility of injury.</p>
	<p style="text-align: center;">⚠ CAUTION</p> <p>THE FOLLOWING SECTIONS OF THIS MANUAL ARE INTENDED ONLY FOR QUALIFIED SERVICE PERSONNEL WHO ARE FAMILIAR WITH ELECTRICAL EQUIPMENT. THESE ARE NOT INTENDED FOR THE OPERATOR.</p>

ACCESSORIES

<u>Description</u>	<u>Part Number</u>
Shipping Carton	49026
Accessory Pack	44444

ORDERING SPARE PARTS

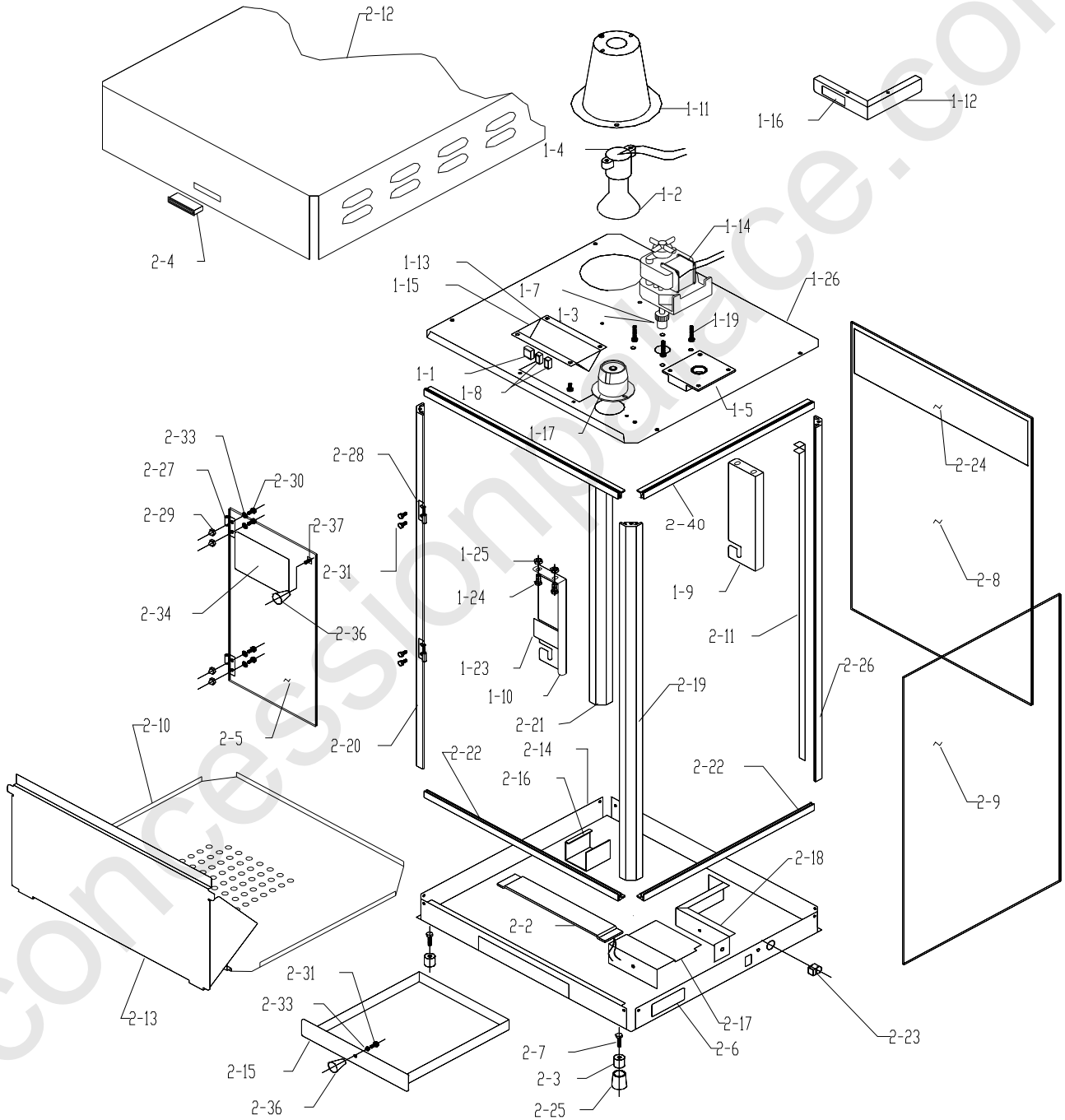
1. Identify the desired part by checking it against the photos, illustrations, and/or the parts list.
2. When ordering, please include part number, part name, and quantity desired.
3. Please include your model name and machine serial number (located on the machine nameplate) with your order.
4. Address all parts orders to:

Parts Department
Gold Medal Products Co.
10700 Medallion Drive
Cincinnati, Ohio 45241-4807

or, place orders at:

(800) 543-0862
Fax: (800) 542-1496
E-mail: info@gmpopcorn.com

2454 POPPER ASSEMBLY



PARTS LIST - HANGER ASSEMBLY

Item No.	Part No.	Description
1-0	54000	Complete Hanger Assembly
1-1	42798	Switch - Kettle
1-2	41671	Reflector Flood Light
1-3	41742	Set Screw #10-32 x 3 /16"
1-4	56050	Lamp Holder
1-5	55098	Gear Box w/ Bushing
1-7	47060	Spur Gear
1-8	42532	Switch - Light and Warmer
1-9	55070	Front Hanger Arm
1-10	55071	Rear Hanger Arm
1-11	55066	Light Shield - Conical
1-12		n/a
1-13	48501	Switch Box
1-14	49045	Kettle Drive Motor
1-15	48502	Label, Switches
1-16	41452	Warning, Max Lamp 75W
1-17	49330	Receptacle
1-19	49322	#10-24 x 1 Hex Mach Screw
1-23	87087	Label, Caution Hot
1-24	14821	Bolt 1/4-20 x 1/2" Hex HD
1-25	74133	1/4-20 Hex Nut
1-26	49676	Motor Plate

PARTS LIST - CABINET ASSEMBLY

Item No.	Part No.	Description
	Model #2454	
2-0	59416	Complete Cabinet Assembly
2-1	22038	Lead-In Cord *
2-2	49440	Heat Element 50 Watt
2-3	47328	Glide
2-4	47561	Magnetic Catch
2-5	49696	Door
2-6	76097	Label, Unplug to Clean *
2-7	41314	#10-24 x 3/4" Screw
2-8	49796	Front Glass- RETRO
2-9	55067	Side Glass
2-10	49675	Bottom Corn Pan
2-11	49091	Wire Duct
2-12	49669	Top Pan
2-13	49697	Drop Panel
2-14	49674	Bottom Pan
2-15	49100	Old Maid Pan
2-16	49425	Strip Heater Bracket
2-17	49104	Cover, Corner Cover
2-18	49105	Corner Cover
2-19	49693	Right Rear Corner Post
2-20	49690	Left Rear Corner Post
2-21	49691	Left Front Corner Post
2-22	74164	Glass Extrusion 16 9/32" LG (2 Req)
2-23	76026	Strain Relief #SR-6P3-4
2-24		n/a
2-25	49123	Crutch Tip
2-26	49692	Right Front Corner Post
2-27	61359	Left Female Hinge
2-28	41349	Left Male Hinge
	61373	Right Female Hinge
	41350	Right Male Hinge
2-29	47702	#8-32 Acorn Nut
2-30	42227	#8-32 x 3/8" Screws
2-31	42044	#8-32 x 3/8" Screws
2-32	74149	#8-32 Hex Nuts
2-33	74150	#8 Internal Tooth Washer

PARTS LIST - CABINET ASSEMBLY

Model #2454		
Item No.	Part No.	Description
2-36	47120	Knob
2-37	49059	Rigid Glass Channel 21 5/8" LG. (6 Req) *
2-38	49510	Rigid Glass Channel 15" LG (4 Req) *
2-39	49511	Rigid Glass Channel 17" LG (2 Req) *
2-40	49508	Glass Extrusion 14 9/32" LG (4 Req)

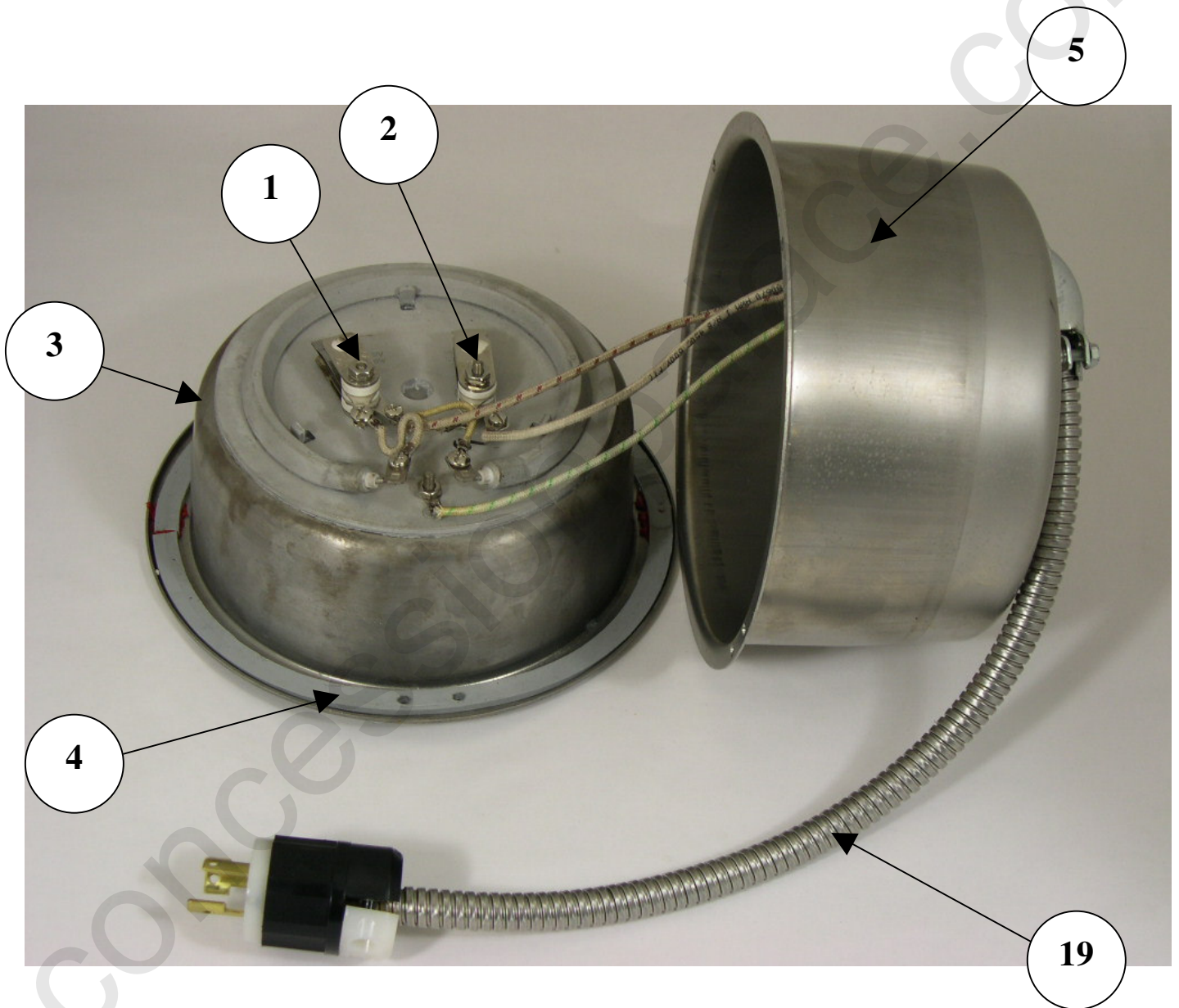
* Not Shown

4 OZ. KETTLE ASSEMBLY

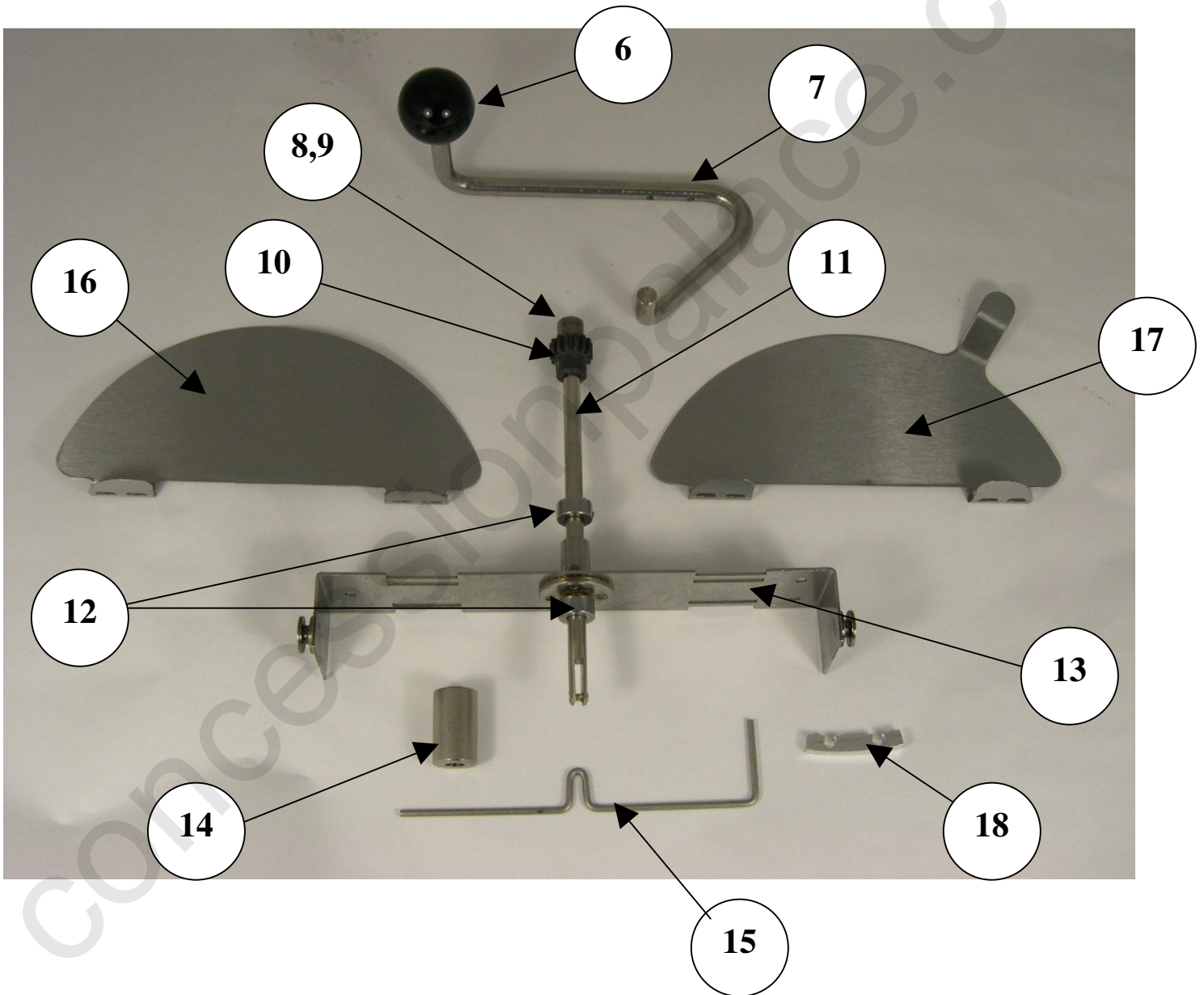


When ordered complete, (as shown above), the kettle is item number 54000.

KETTLE BOTTOM



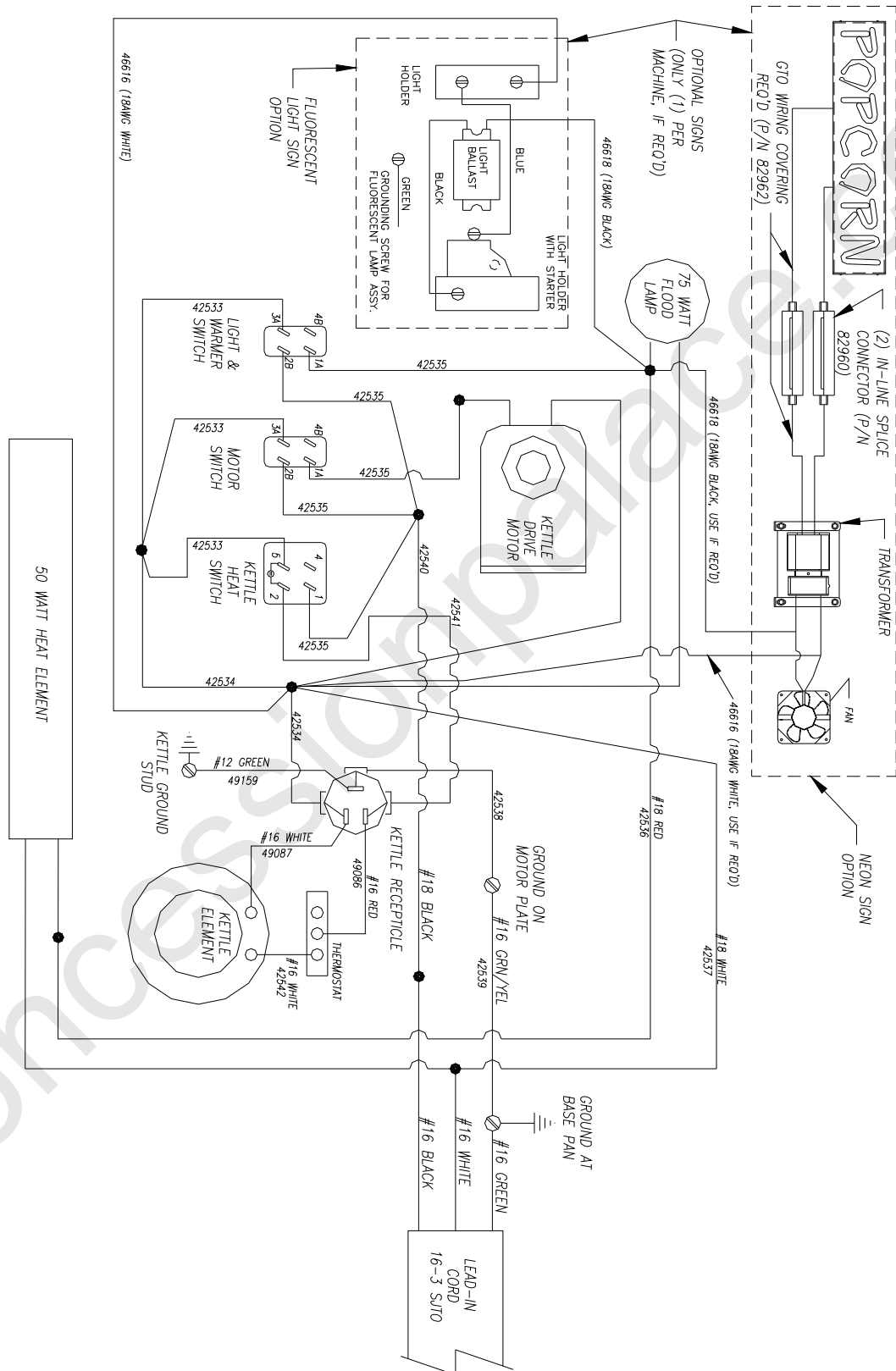
LID AND AGITATOR ASSEMBLY



PART LIST - 4 oz. KETTLE ASSEMBLY

Item No.	Part No.	Description
1	76089	Kettle Thermostat (450 Degree)
2	76702	Hi-Limit Thermostat (525 Degree)
3	54027	Kettle / Heat Element Assembly
4	54003	Kettle Gasket
5	54004	Kettle Shell
6	47110	Dump Handle Knob
7	49314	Dump Handle
8	47106	Needle Bearing
9	49701	Retaining Ring
10	47060	Spur Gear
11	54007	Agitator Shaft
12	46649	Set Collars (2)
13	54006	Crossbar
14	49013	Agitator Weight
15	54030	Stir Rod
16	55073	Rear Lid
17	55074	Front Lid
18	49362	Spacer, Dump Handle
19	54028	Kettle Cord Complete (Individual Parts Below)
	49086	Kettle Lead Wire (Red)
	49087	Kettle Lead Wire (White)
	49159	Kettle Lead Wire (Green)
	49329	15 Amp Kettle Plug
	46241	90 Degree Connector
	77079-16	Conduit
	77080NM	Conduit Bushings (2)

ELECTRICAL SCHEMATIC



WARRANTY

WE WARRANT to the original purchaser the Gold Medal equipment sold by us to be free from defects in material or workmanship under normal use and service. Our obligation under this warranty shall be limited to the repair or replacement of any defective part for a period of six (6) months from the date of sale to the Original Purchaser with regard to labor and two (2) years with regard to parts and does not cover damage to the equipment caused by accident, alteration, improper use, voltage, abuse, or failure to follow instructions.

THIS WARRANTY IS IN LIEU OF ALL OTHER WARRANTIES EXPRESSED OR IMPLIED, AND OF ALL OTHER OBLIGATIONS OR LIABILITIES ON OUR PART, INCLUDING THE IMPLIED WARRANTY OF MERCHANTABILITY. THERE ARE NO WARRANTIES WHICH EXTEND BEYOND THE DESCRIPTION ON THE FACE HEREOF. We neither assume, nor authorize any other person to assume for us, any other obligation or liability in connection with the sale of said GOLD MEDAL equipment or any part thereof.

The term "Original Purchaser" as used in this warranty shall be deemed to mean that person, firm, association, or corporation who was billed by the GOLD MEDAL PRODUCTS COMPANY, or their authorized distributor for the equipment.

THIS WARRANTY HAS NO EFFECT AND IS VOID UNLESS THE ORIGINAL PURCHASER FIRST CALLS GOLD MEDAL PRODUCTS COMPANY AT 1-800-543-0862 TO DISCUSS WITH OUR SERVICE REPRESENTATIVE THE EQUIPMENT PROBLEM, AND, IF NECESSARY, FOR INSTRUCTIONS CONCERNING THE REPAIR OR REPLACEMENT OF PARTS.

NOTE: This equipment is manufactured and sold for commercial use only.



GOLD MEDAL PRODUCTS COMPANY

10700 Medallion Drive

Cincinnati, Ohio 45241-4807 USA

www.gmpopcorn.com

Phone: 1-800-543-0862

Fax: 1-800-542-1496